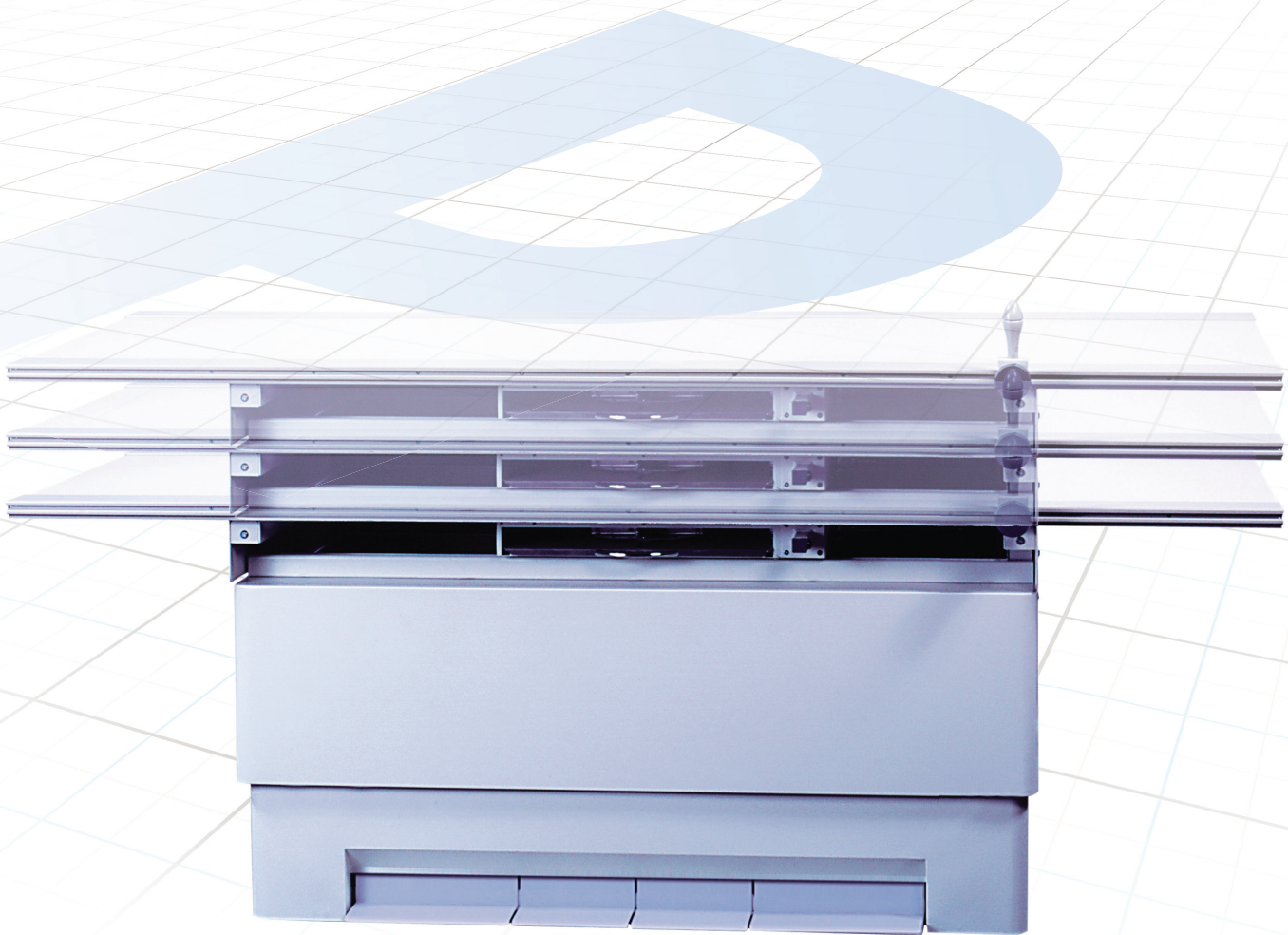


# PHOENIX

## Elevating, Four-way Float Top Radiographic Table

Simplicity, Performance and Safety



The Phoenix elevating radiographic table's heavy-duty, compact, space-saving design provides exceptional versatility and allows for installations in small x-ray rooms.

While the four-way float top glides effortlessly on its precision bearing system and the convenient location of the two-step foot pedals, which control all tabletop movements, the Phoenix elevating, four-way float top radiographic table is the ideal choice when searching for patient positioning convenience.

## ELEVATING, FOUR-WAY FLOAT TOP RADIOGRAPHIC TABLE

### TABLETOP MOVEMENT

The large, easy-to clean tabletop's precision bearing system ensures effortless patient positioning. Combined with the extended Bucky travel, the Phoenix enables full coverage the entire length of the table.

### MOTION CONTROLS

Conveniently located foot pedals initiate all table movements for accurate exposure positioning. Vertical travel stops in both directions at the radiographic position.

### COMPATIBILITY

The extended tabletop travel provides access for wheelchair patients. It is compatible with most floor and ceiling mounted tubestands and other radiographic systems.

### HIGH QUALITY MATERIALS

The low absorption tabletop material reduces exposure dose rate while the small skin-film distance permits precise, low magnification film studies. Standard side rails support a wide variety of accessories.

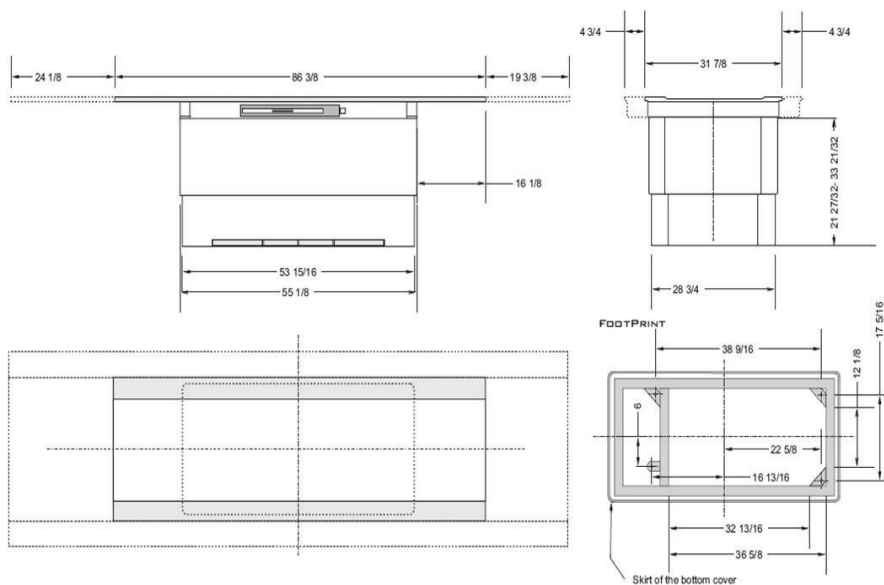
### MODEL DIVERSITY

Accepts standard non size-sensing and size-sensing grid cabinets or reciprocating buckys, matching trays and grids while still leaving enough room for AEC chambers.

### DIGITAL COMPATIBILITY

Adding CR or DR is now easier than ever due to the new Bucky carriage design. Specialized mounting hardware for different digital panels is available upon request.

PHOENIX	SPECIFICATIONS
Tabletop length	86" (220 cm) (Optional 73" (185 cm))
Tabletop width	32" (81 cm)
Film-tabletop distance	3" (7,5 cm)
Longitudinal travel	43" (110 cm)
Transverse travel	± 4.75" (± 12 cm)
Tabletop elevation	12" (30 cm) (Optional 14" (35 cm))
Grid cabinet / Bucky travel	22.5" (57 cm)
Weight limit	- Useful use of 500 lbs (226,8 kg) - Capable use of 660 lbs (300 kg)
Cassette sizes	All sizes up to a format of 17" x 17" (43 x 43 cm)
Tabletop absorption density	< 0,80 mm Al equivalent
Power requirements	230/120 VAC ±10%, 50/60 Hz, 3/6 A current consumption
Optional accessories	Head and/or Hip clamp Compression belt Lateral cassette holder



For more information, please visit our website at [www.cxmed.com](http://www.cxmed.com) or contact your local authorized distributor.



Control-X Medical  
1755 Atlas Street  
Columbus, OH 43228, USA  
Tel: 1-614-777-9729  
Toll free: 1-800-777-9729  
Fax: 1-614-777-0395  
E-mail: [sales@cxmed.com](mailto:sales@cxmed.com)  
Web: [www.cxmed.com](http://www.cxmed.com)



[www.cxmed.com](http://www.cxmed.com)